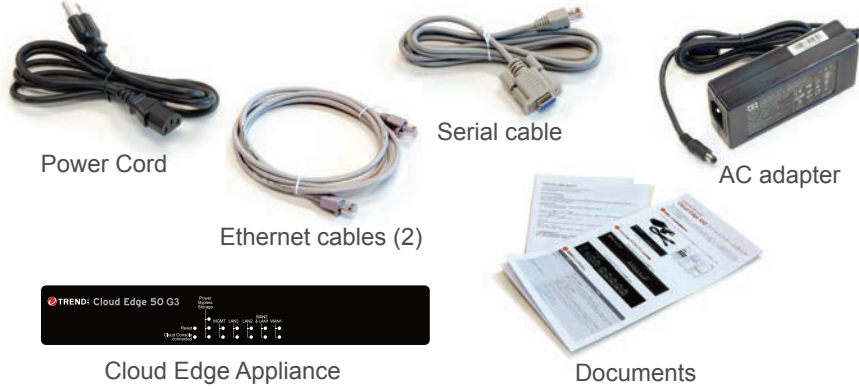


Trend Micro Cloud Edge is a next generation security solution for MSPs (Managed Service Provider) that combines on-premises and cloud-based security features. Deploy your Cloud Edge appliances on-premises and the MSP can remotely manage your network through the cloud.

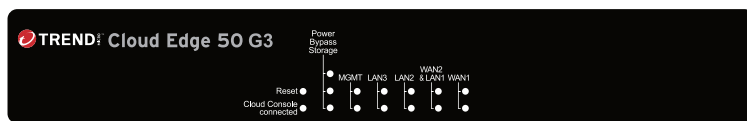
1 Opening and Inspecting the Carton

Verify that the Cloud Edge appliance carton contains the following items:

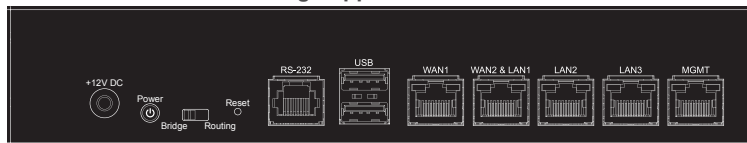


2 Examining the Cloud Edge Appliance

Cloud Edge Appliance Front Panel

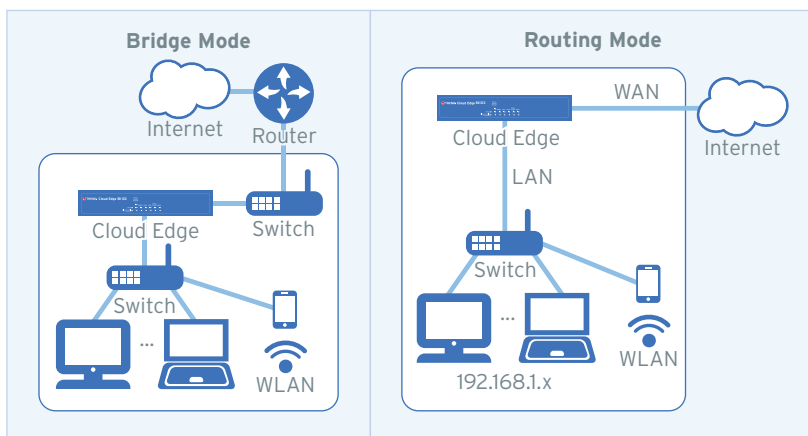


Cloud Edge Appliance Back Panel



Note: The model name and panels shown might differ slightly from your appliance.

3 Deployment Modes



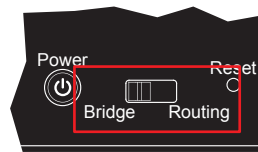
Mode	Description
Bridge	The Cloud Edge appliance acts as a transparent layer 2 device, providing scan and threat protection without interrupting traffic flow. Bridge mode does not require client, router, or switch modifications.
Routing	The Cloud Edge appliance is visible on the network and acts as a layer 3 routing device with traffic scanning and control capabilities.

4 Deployment Checklist

Requirement	Details
Ethernet cables (3 cables)	Connect to the MGMT port (management) and the WAN and LAN1 data ports.
IP addresses (1-2 addresses)	<p>Bridge Mode:</p> <ul style="list-style-type: none"> Obtain information for one internal address, either DHCP or static (IP address, netmask, and gateway). <p>Routing Mode:</p> <ul style="list-style-type: none"> Obtain the information about connecting to the WAN from your Internet Service Provider (ISP): DHCP, Static, or PPPoE. Obtain IP address information for the LAN1 connection (DHCP or Static).
DNS settings	<p>Bridge Mode:</p> <ul style="list-style-type: none"> Your network DNS server IP addresses. <p>Routing Mode:</p> <ul style="list-style-type: none"> Use either automatic DNS settings assigned by the ISP's DHCP or obtain your network DNS server IP addresses.
Laptop with Ethernet port	A computer that has the following software installed: <ul style="list-style-type: none"> Adobe™ Flash™ 10 or later Supported web browser <ul style="list-style-type: none"> Mozilla™ Firefox 80 or later Google™ Chrome 83 or later Microsoft™ Edge (Chromium) 85 or later

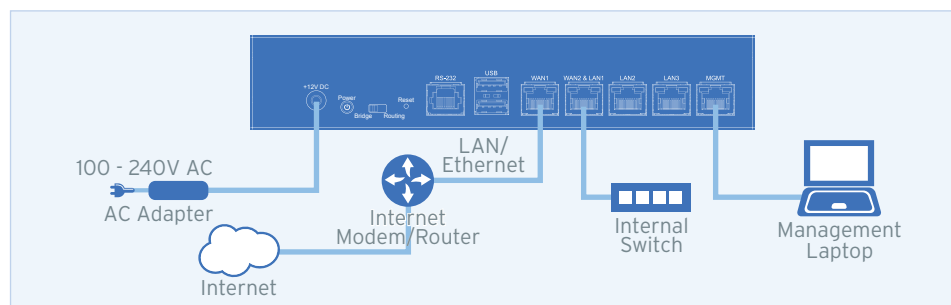
5 Setting up the Hardware

- Toggle the switch on the back panel as needed.
- Connect the Cloud Edge appliance to a power source.
- Power on the Cloud Edge appliance.



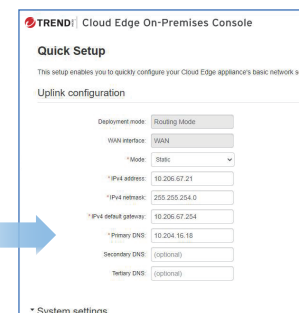
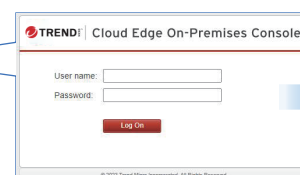
6 Connecting to the Network

- Connect the WAN1 port to a wide area network (i.e. Internet).
- Connect the LAN1 port to a switch on your internal network.
- Optionally, connect the LAN2 and LAN3 ports to additional devices on the internal network.



7 Logging on the Web Console

- Connect computer to the Cloud Edge appliance MGMT port.
- Open a supported web browser.
- Go to the URL: <https://setup.cloudedge> or <https://192.168.252.1:8443>.
- Specify the logon credentials.
 - User name:** admin
 - Password:** adminCloudEdge
- Press **Enter** or click **Log On**.



8 Performing the Initial Configuration

After logging on for the first time, the Quick Setup screen opens automatically.

Bridge Mode

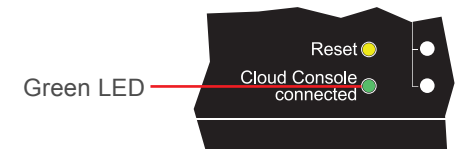
- In the **Uplink configuration** section, specify information for br0.
 - DHCP**
 - Static:** Specify IPv4 address, netmask, and gateway.
- Specify DNS server IP addresses (if not assigned by DHCP).
- Under **System settings** section:
 - Specify a FQDN in the **Host name** field.
 - Configure time settings.
 - Automatically: Select **Enable NTP server** and enter the NTP server IP address.
 - Manually: Select **Manually set time** and enter time in the **Local time** field.
- Click **Test Configuration** to verify and then click **Save & Register**.

Routing Mode

- In the **Uplink configuration** section, specify information for the WAN interface.
 - DHCP**
 - PPPoE:** Specify user name and password.
 - Static:** Specify IPv4 address, netmask, and gateway.
- Specify DNS server IP addresses (if not assigned by DHCP or PPPoE).
- Under **System settings** section:
 - Specify a FQDN in the **Host name** field.
 - Configure time settings.
 - Automatically: Select **Enable NTP server** and enter the NTP server IP address.
 - Manually: Select **Manually set time** and enter time in the **Local time** field.
- Click **Test Configuration** to verify and then click **Save & Register**.
- Click on the **Cloud Edge On-Premises Console** link.
- Go to **Network → Interfaces**.
- Click the LAN1 interface, select L3 type, and configure IP address settings.
 - DHCP**
 - Static:** Specify IPv4 address, netmask, and optionally, a gateway.
- Click **Apply**.

9 Verifying Connectivity

The Green LED (Light-Emitting Diode) on the front panel shows the deployment status.



Green LED	Status
No light	The Cloud Edge appliance cannot communicate with the Internet.
Solid green light	The Cloud Edge appliance is registered and communicating with Cloud Edge Cloud Console.
Blinking green light	The Cloud Edge appliance is not registered or cannot communicate with Cloud Edge Cloud Console. Contact your managed service provider for assistance.

10 Contact Information

- Website: <http://www.trendmicro.com>
- List of worldwide offices and phone numbers: <http://www.trendmicro.com/us/about-us/contact/index.html>